

Connecting **people, resources, and ideas** so the community we know and love thrives.



**2020 IMPACT REPORT**



**Yakima Valley**  
Community Foundation



# Investing in Heartfelt Impact

The Yakima Valley, in the heart of rural Central Washington, is a place with significant agriculture, protected forests, and tribal lands of the Yakama Nation. The region is rich in natural resources and diverse cultures, which all share a strong reliance on the land and water for economic prosperity and enrichment.



**We understand our community's strengths and disparities and recognize inequities have existed here for generations. We believe people should have equitable access to opportunity, and when equity is addressed, our community will be stronger economically, healthier physically and mentally, and prepared educationally to meet the challenges we face.**



We are here to connect people, resources, and ideas so people thrive – regardless of their neighborhood, skin color, gender, or other factors. Our work is focused on equity in education, health, and civic engagement. We address complex conditions and systems, and we provide access to opportunities for those who have been historically and frequently left behind.

The Yakima Valley is as diverse culturally as it is geographically, bringing with it unique challenges and tremendous opportunities.



RURAL



AGRARIAN



TRIBAL

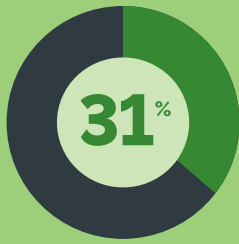


URBAN

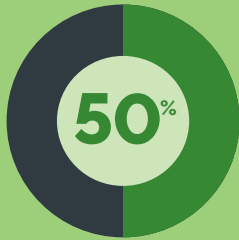


FOREST

# Our Community:



**31%**  
CHILDREN  
0-17 YEARS  
OF AGE



**50%**  
34 YEARS  
OF AGE OR  
YOUNGER



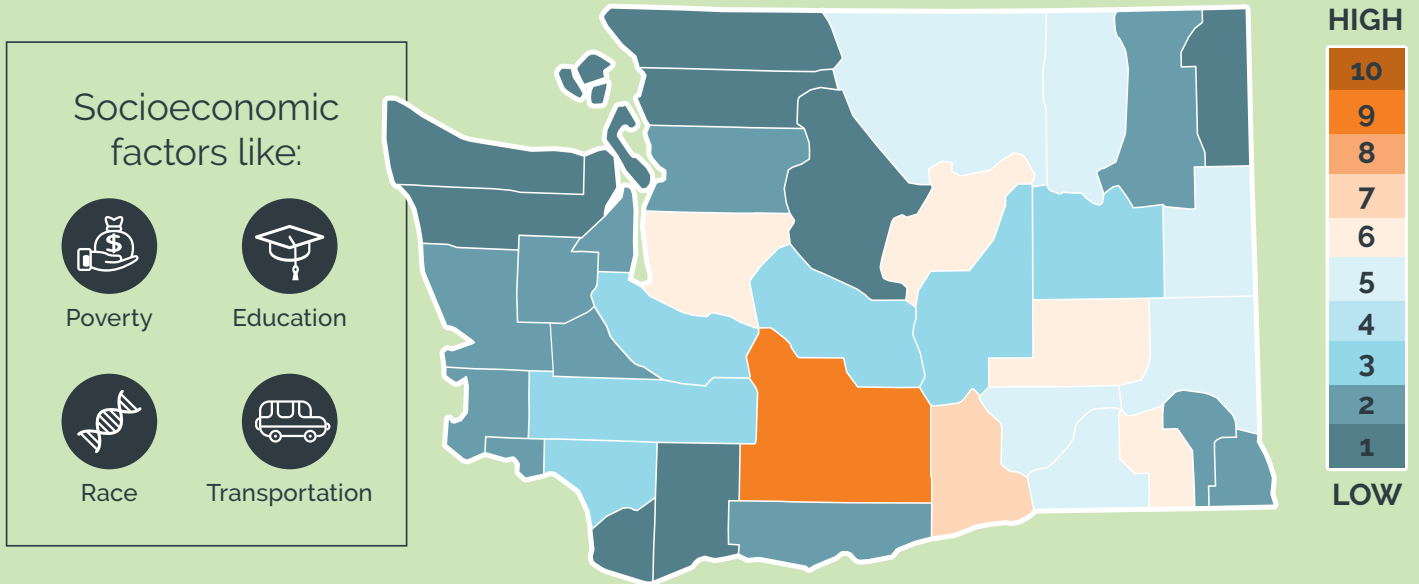
POPULATION:  
**250,873**

Rich in Cultural  
Diversity

- 50.2% Hispanic
- 41.3% White
- 4.2% Native American
- 1.7% Two or more races
- 1.6% Asian American / Pacific Islander
- 1.2% African American

Source: 2019 Total Yakima County Population by Race – Yakima Valley

## YAKIMA VALLEY RANKS HIGHEST IN SOCIOECONOMIC DISPARITY AND ENVIRONMENTAL CONCERNS IN WASHINGTON STATE.



Washington Environmental Health Disparities Map – Visit the complete map at [doh.wa.gov/ibl](http://doh.wa.gov/ibl) and select "Environmental Health Disparities"

The Yakima Valley is home to thousands of essential workers and hardworking people, many of whom help cultivate some of the world's best produce, timber, wine, beer, and other food products.



# Community foundations have three primary roles:



CONVENE PEOPLE AND RESOURCES



GROW ENDOWMENTS AND FUNDS FOR THE CHARITABLE BENEFIT OF THE COMMUNITY



PROVIDE COMMUNITY LEADERSHIP

In 2020, your community foundation fulfilled this role by managing and investing **104** different funds totaling **\$72,060,293**, including:

- 25 Endowment or Agency Funds for other charitable organizations in our community totaling \$5.9MM
- 30 Donor Advised Funds totaling \$8.9MM
- 11 Scholarship Funds totaling \$276MM
- 33 Other funds such as Field of Interest funds totaling \$29.7MM

## In 2020, your community foundation also:

- Granted 179 charitable organizations a total of **\$5,776,951.71** in the following areas:

Basic Needs	\$1,856,969.00
Civic	\$288,750.00
Culture and Arts	\$646,958.43
Education	\$1,425,664.24
Environment	\$53,799.36
Health	\$1,494,810.68
Other	\$10,000.00

- Established 12 new funds
- Received \$7,291,393 in contributions, including \$1.155MM for the Resilience & Response Fund to assist the Yakima Valley during the pandemic
- Returned 13.1% on funds invested with us



## **In addition, YVCF collaborated on grants made directly to other charitable organizations in Yakima and Kittitas Counties or through us as the intermediary during the pandemic, including:**

- \$600,000 (\$50,000 each) to 12 nominated and selected organizations from the WA Equity Relief Fund for Nonprofits
- \$75,000 to three charitable organizations for direct family assistance via an intermediary grant to YVCF from the All in WA - COVID Relief Fund Emergency Flexible Financial Assistance
- \$250,000 to childcare providers in Yakima and Kittitas County via an intermediary grant to YVCF from All in WA - Childcare Initiative
- \$446,500 to 22 youth-serving organizations identified and/or reviewed by YVCF staff who received funds from the WA Youth Development Nonprofit Relief Fund
- \$150,000 to three youth-serving charitable organizations from All in WA COVID-19 Relief Fund – Youth Behavioral Grants



## Heartlinks Hospice & Palliative Care

Since 1978, Heartlinks Hospice & Palliative Care has provided four core programs: Hospice Care, Adult Palliative Care, Pediatric Palliative Care, and Grief Support. Heartlinks offers these services at no cost to the local community.

When COVID-19 hit, YVCF jumped into action to support Heartlinks. YVCF not only donated much-needed funds, but they gifted PPE equipment, gas cards, food, and so much more to help patients who are not able to leave their home or are desperate for their family to come care for them. With this support, Heartlinks made it possible for patients and their families to reconnect after months and months separated from one another.



I am blown away by the Yakima Valley Community Foundation and its ability to understand the needs of our community and move mountains in order to help contribute to the fulfillment of our needs.

– *Shelby Moore, Executive Director of Heartlinks*



# La Casa Hogar

La Casa Hogar in Yakima partners with migrant Latin@ families to provide adult education, citizenship classes, and legal services. Classes include English, pre-GED, technology, and early learning for young children.

Due to a lack of accessible Spanish-language information, COVID-19 brought additional challenges to the Latin@ community. With help from YVCF, La Casa Hogar dispensed over 20,000 masks to families and children and was able to create communications in the language and format needed to reach the local Latin@ population. Employees and volunteers at La Casa Hogar are grateful that YVCF helped give them the ability to respond quickly as a primary advocate for quickly changing community needs.



**YVCF is always open to listening and having conversations. They always have their ear to the ground seeking out people's needs. They are creative in ways they respond to needs in the Valley.**

*- Laura Armstrong, Executive Director of La Casa Hogar*



# Comprehensive Healthcare

Comprehensive Healthcare is a non-profit organization providing compassionate, individualized behavioral healthcare services throughout the Yakima Valley. The funds they received from YVCF have helped alleviate the financial strain caused by the unprecedented circumstances of the COVID-19 pandemic.



**The Yakima Valley Community Foundation has been an outstanding supporter of our mission and a valued partner by helping us become more trauma-informed, and recognizing the positive impact we make on the communities and people we serve.**

*- Luke Hoisington, Chief Strategy and Innovations Officer*



# Overcoming the Digital Divide



The COVID-19 pandemic made it all too clear how important internet access is to successfully function in our modern society. Healthcare providers, criminal justice systems, schools, and many employers turned to remote options as a safe means of communicating with the public and conducting work. The necessity of high-speed internet access became painfully clear for residents and businesses.

Many areas of the Yakima Valley, especially the Yakama Reservation, have extremely limited access to internet. This means families in such areas are unable or challenged to obtain needed services and education.

To help remedy this situation, the Yakima Valley Community Foundation formed the Broadband Action Team (BAT) in partnership with Yakima County's Human Services Department. After gaining community interest, BAT began mapping out infrastructure and measuring internet speeds to identify communities with the greatest need. This information enabled the BAT team to validate which communities qualified for what type of funding. It was essential to pursuing the right type of federal, state, and philanthropic resources to bridge the digital divide in our community.

YVCF staff and the Broadband Action Team used the speed test data and their knowledge to partner with the Yakama Nation to apply for a \$2.970 million USDA Rural Development Community Connect grant. If awarded, the project will be a huge boost for economic development, telemedicine, precision aquaponics, and public safety. The project will both increase internet access and expand cellular coverage along the US Highway 97 corridor. For those who have driven through that area of Highway 97 and lost cellular reception, support for this project makes total sense.

The Tribal Council voted unanimously in support of this project marking their first expansion of telecommunication infrastructure within the Closed Area of the Yakama Reservation since 1855. With this show of confidence, the BAT team worked diligently to gather over 25 letters of support, including letters from local elected officials, hospitals, members of Congress, businesses, U.S Senators, and the Washington State Broadband Office.

Yakima Valley Community Foundation will continue this innovative work with our community to address the digital divide as it supports equity in education, health access, and economic prosperity. The Broadband Action Team recently completed a very comprehensive community research project (beyond the speed tests) related to our community's use of technology and internet access. The research results will be shared with stakeholders and used to prioritize the next steps to connect our valley. To learn more and stay abreast of BAT progress, please visit [connectourvalley.org](https://connectourvalley.org).



**The Yakima Valley Community Foundation has been a leader in Washington state's effort to close the digital divide. The Yakima Valley Broadband Action Team set the bar for a best practice in engaging community support and action. That is why it is my honor to recognize the Yakima Valley Community Foundation and their partnership as one of the recipients of our first annual Washington State Broadband Office Above and Beyond awardees. They established a new standard for how we measure success around community involvement, action, and results.**



***- Russ Elliott, Director, Washington State Broadband Office***





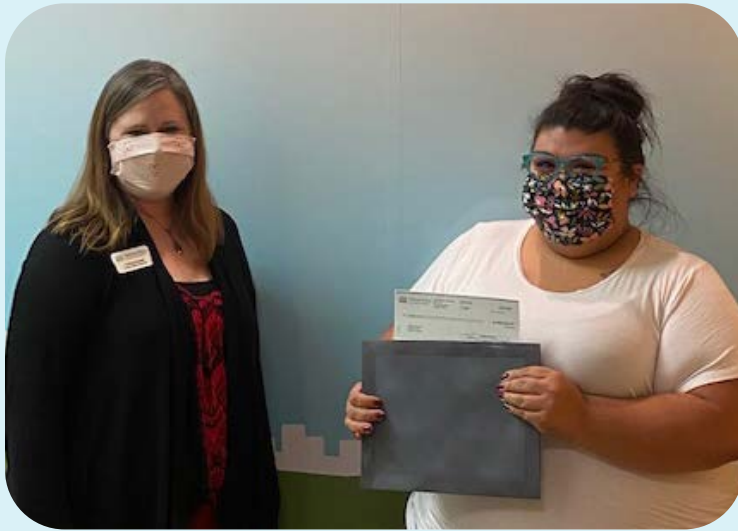
## The Yakama-Yakima el Censo 2020 Coalition

The Yakama-Yakima el Censo 2020 Coalition (or YA YI for short) worked to ensure a fair, accurate, and complete Census 2020, particularly for those communities who have been historically undercounted in south-central Washington. This group formed in early 2018 in anticipation of the decennial Census in 2020. After nearly two years of planning, the onset of the COVID-19 pandemic required that all outreach plans had to change.

What would have been in-person booths at community gatherings became car caravans and virtual outreach. Even with all the disruptions of 2020, this group did creative outreach and education across not only Yakima County but throughout Central WA about the importance of the Census count. The core group that governed this work at YVCF included members from the tribal community, the LatinX community, and the Asian-Pacific Islander community. Additional partnerships with groups like the NAACP of Yakima, the WA State Department of Commerce, and the Census Bureau staff at both the local, regional, and national levels made this a truly collaborative project with the potential for a decade of impact.

The Yakima Valley Community Foundation was part of a statewide and nationwide network of funders who prioritized locally-based efforts to support Census 2020.

# Provided over \$1 Million dollars to Northwest Harvest



Lindsay Boswell, Director of Grants and Community Impact, delivering the first grant of \$20,000 to a NW Harvest Representative in April.

Northwest Harvest is Washington state's leading hunger relief agency. In addition to ensuring access to healthy food for those suffering from hunger, they aim to shift public opinion and change policies and practices that perpetuate hunger, poverty, and disparities.



Yakima Valley  
Community Foundation



## Pandemic Response

In the first stages of the pandemic, your Community Foundation moved quickly to:



Establish the Yakima Valley Resilience and Response Fund, an Immigrant Relief Fund, and a Keep Arts Alive Fund.



Establish a community advisory committee to regularly review key indicators, to learn from sectors and experts, to strategize, and to quickly disseminate funds where needed.



Establish [yakimavalleyneeds.org](http://yakimavalleyneeds.org) to gather needed supplies and volunteers and to coordinate purchasing, donations, and deliveries throughout our Valley.



Pull together strategic partnerships with funders, government entities, and businesses to inform and educate our community in multiple languages, to assist and support the community with PPE, supplies, low-barrier grants, Paycheck Protection Program application assistance, and other technical support.



Serve as a strategic partner for CARES funding distribution at the state and regional level and assist in reviewing state-wide grant applications on behalf of several agencies.

The Yakima Valley Community Foundation is here to listen and to gather resources, ideas, and innovations to support the people and communities in Central Washington. We hope to be an inspiration to other diverse, rural communities.



## Our Work

**Fiscal Sponsor and  
Staff Support to:**

- Act Six Scholarship and Leadership Program
- Asian Pacific Islander Coalition of Yakima
- Investing In Children Coalition
- Ready to Rise
- Yakama/Yakima El Censo Coalition
- Yakima Valley Broadband Action Team
- Yakima Valley Resilience and Response Fund
- Youth Leadership Council for the Yakima Valley

***We greatly appreciate our board of directors, volunteers, donors,  
fund holders, partner agencies, and community!***

STRATEGIC INVESTMENTS FOR HEARTFELT IMPACT



**Yakima Valley**  
Community Foundation

Learn more at  
[yakimavalleycf.org](http://yakimavalleycf.org)